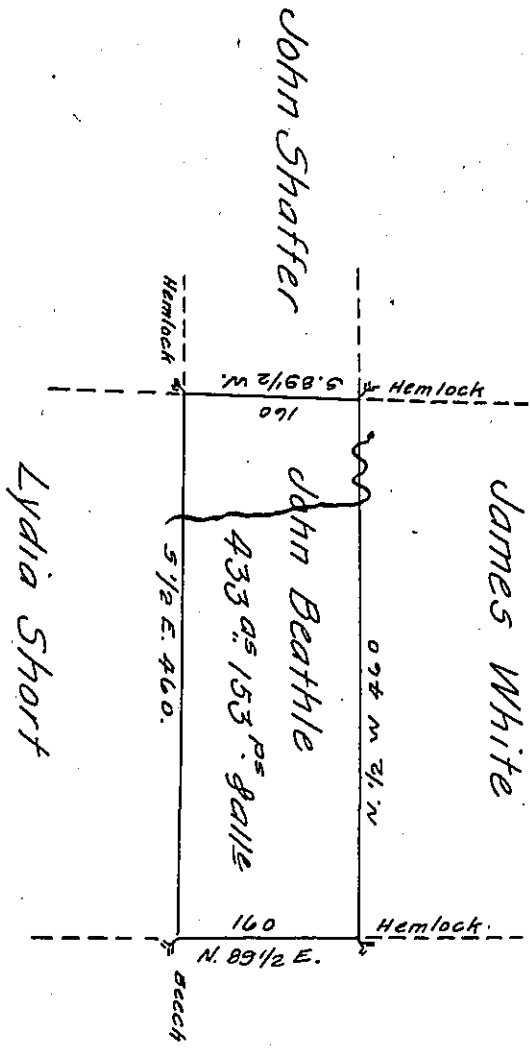


FORM No. 1.



In Pursuance of a Warrant Dated August 17<sup>th</sup> 1793. Surveyed to John Beathle  
 October 14<sup>th</sup> 1793 the above described tract of land Situate in the County  
 of Luzerne. Containing Four Hundred & thirty three Acres &  
 One hundred & fifty three perches and allowance of 6<sup>th</sup> C<sup>t</sup>

Dal. Brodhead Esq<sup>r</sup>  
 Surveyor Gen<sup>l</sup>

Ant<sup>y</sup> Crothers D.S.

IN TESTIMONY that the above is a copy of the original remaining on file in  
 the Department of Internal Affairs of Pennsylvania, made  
 conformably to an Act of Assembly approved the 16th day of  
 February 1833, I have hereunto set my hand and caused  
 the Seal of said Department to be affixed at Harrisburg,  
 this twenty fourth day of December 1907.

*Henry Howell*  
 Secretary of Internal Affairs.